



CROWN IMPERIAL ASSEMBLY INSTRUCTIONS

Single Width Base Unit



CROWN IMPERIAL ASSEMBLY INSTRUCTIONS

Single Width Base Unit

Single Width Base Unit Parts

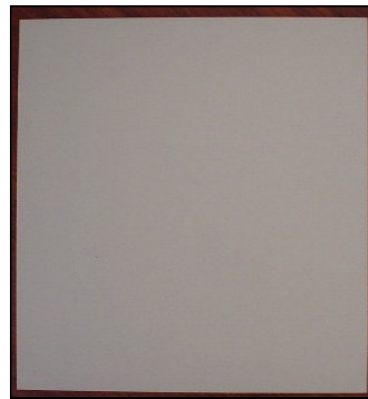
Parts Supplied



A



B



C



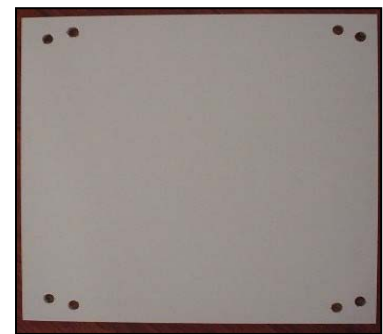
D



F



G



E



CROWN IMPERIAL ASSEMBLY INSTRUCTIONS

Single Width Base Unit

Part Letter	Part Name	Quantity
A	End Panel*	2
B	Top Front Rail	1
C	Shelf	1
D	Back Panel	1
E	Bottom Panel	1
F	Feet Blocks	4
G	Adjustable Feet	4

** NOTE: End Panels are packed separately from all other parts supplied.*



CROWN IMPERIAL ASSEMBLY INSTRUCTIONS

Single Width Base Unit

A 	B 	C 	D 	E
F 	G 	H 	J 	K
L 	M 	N 	P 	Q
R 	S 	T 	U 	
V 	X 		Y 	
W 				



CROWN IMPERIAL ASSEMBLY INSTRUCTIONS

Single Width Base Unit

Fitting Letter	Fitting Name	Quantity
A	Metal Dowel	10
B	Metal Cam	10
C	Wooden Dowel 8 x 40mm	6
D	Wooden Dowel 5 x 25mm	2
E	Connecting Screws (M/F)	3 pairs
F	Black Chipboard Screw 8 x 45mm	
G	Countersunk Screw 8 x 1 ¼"	
H	Countersunk Screw 6 x 5/8"	8
J	Countersunk Screw 6 x ½"	6
K	Flange Head Screw 6 x ¾"	
L	Flange Head Screw 6 x 5/8"	
M	Euro Screw 6 x 11mm	
N	Round Head Screw 6 x 5/8"	
P	Shelf Stud	4
Q	Rubber Sleeved Shelf Stud	
R	Angle Bracket	2
S	Door Buffer Pad	4
T	5mm Plugs	14
U	35mm Bung	
V	Crown Conceal Cap	
W	Hanging Plate	
X	Plinth Clip	2
Y	Peg-o-Lock	



CROWN IMPERIAL ASSEMBLY INSTRUCTIONS

Single Width Base Unit

Preparation

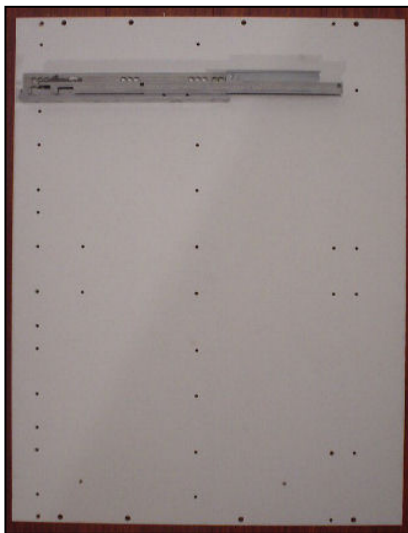
Before assembly Drawer Runners need to be fitted to both End Panels, as shown:

Imperial Kitchen with Luxury Drawers (see **Tandem Box** Drawer Instructions)

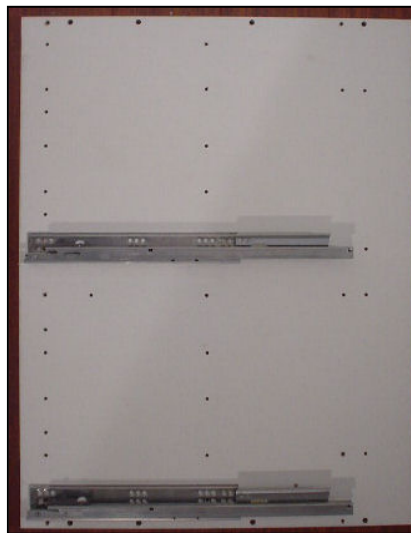
Use the holes shown to attach the drawer runner:



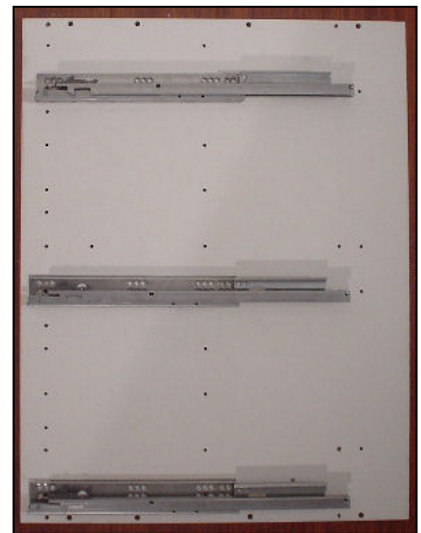
Drawer Line



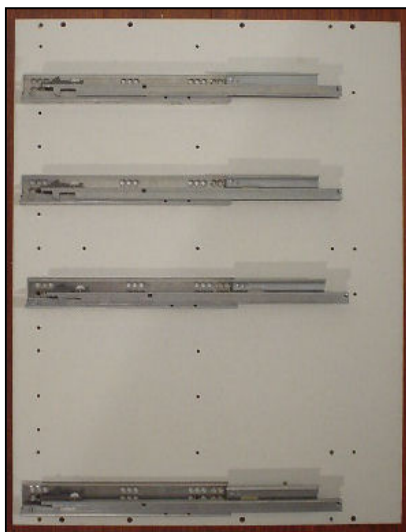
2 Drawer Pack



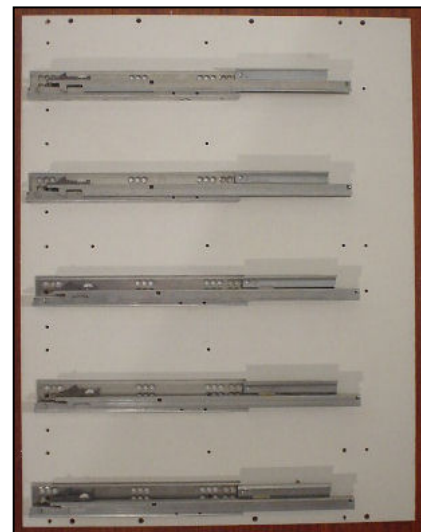
3 Drawer Pack



4 Drawer Pack



5 Drawer Pack

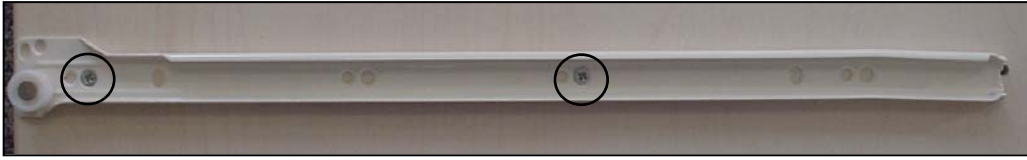




CROWN IMPERIAL ASSEMBLY INSTRUCTIONS

Single Width Base Unit

Lifestyle Kitchen with **Standard** Drawers (see **Metabox Drawer** Instructions)
Use the holes shown to attach the drawer runner:



Drawer Line



2 Drawer Pack



3 Drawer Pack



4 Drawer Pack



5 Drawer Pack





CROWN IMPERIAL ASSEMBLY INSTRUCTIONS

Single Width Base Unit

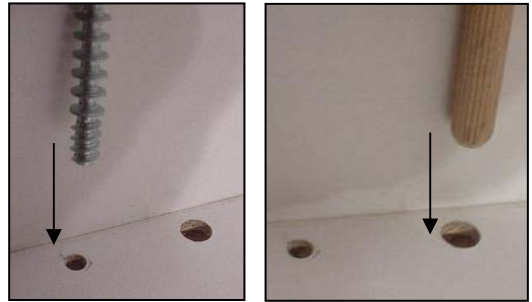
Assembly Instructions

Step 1. Insert fittings into End Panels

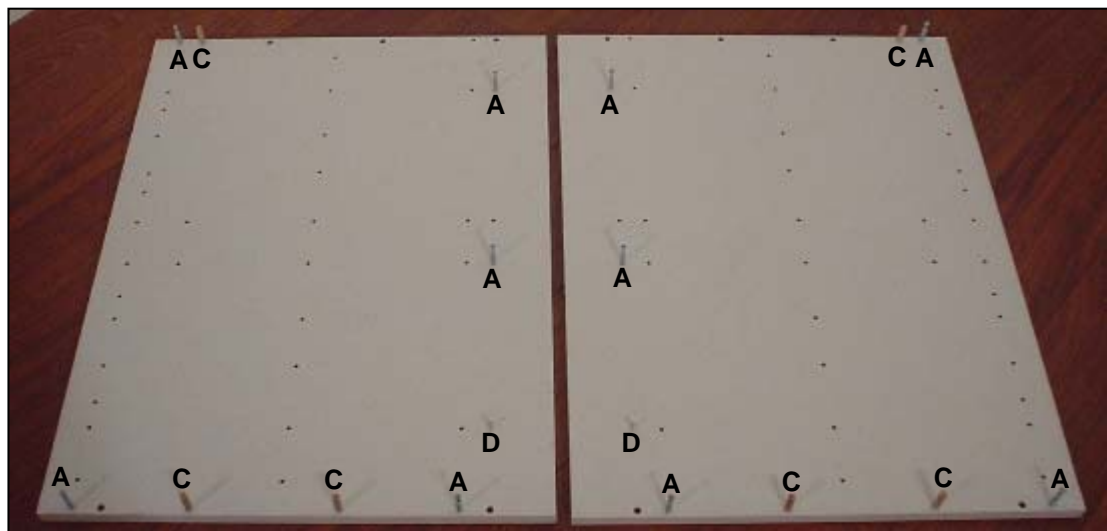
Insert Metal Dowels (fitting A) and Wooden Dowels (fitting C) into the end panel, as shown.

Mirror this for the remaining end panel.

1.1. Insert fittings A and C



1.2. Positions of fittings A and C on End Panels





CROWN IMPERIAL ASSEMBLY INSTRUCTIONS

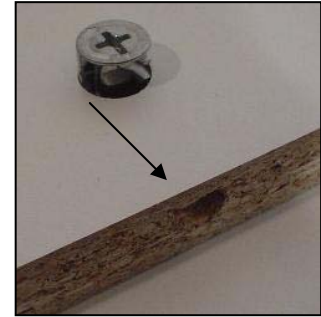
Single Width Base Unit

Step 2. Top Front Rail

Insert the Circular Cams (fitting B) into the holes in the top front rail.

Ensure the arrows on the circular cams, are pointing outwards, towards the pre-drilled edge.

2.1. Insert fitting B



2.2. Position of fitting B in Support Rail



Step 3. Fit Top Front Rail

Step 3.1

Take the top front rail and push firmly home onto the end panel, as shown.

3.1. Fit Top Front Rail to End Panel

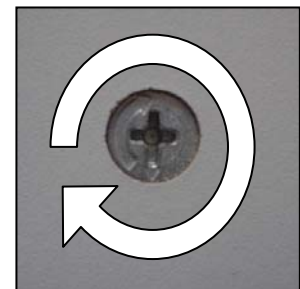


Step 3.2

Using a screwdriver, turn the circular cam clockwise to lock.

Repeat for all cams.

3.2. Lock Cams to secure





CROWN IMPERIAL ASSEMBLY INSTRUCTIONS

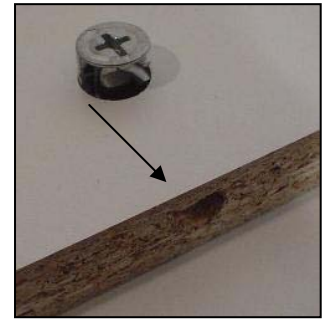
Single Width Base Unit

Step 4. Back Panel

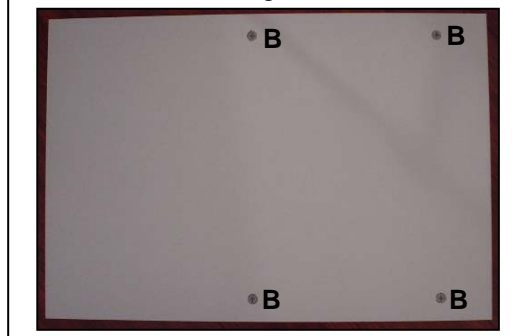
Insert the Circular Cams (fitting B) into the holes in the back panel.

Ensure the arrows on the circular cams, are pointing outwards, towards the pre-drilled edge.

4.1. Insert fitting B



4.2. Position of fitting B in Back Panel



Step 5. Fit Back Panel

Step 5.1

Take the back panel and push firmly home onto the end panel, as shown.

Ensure the cams are facing outwards.

5.1. Fit Back Panel to End Panel

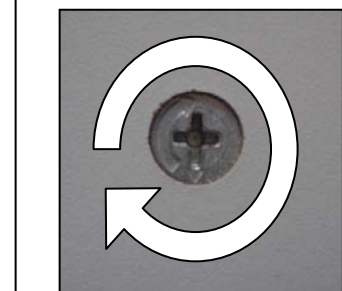


Step 5.2

Using a screwdriver, turn the circular cam clockwise to lock.

Repeat for all cams.

5.2. Lock Cams to secure





CROWN IMPERIAL ASSEMBLY INSTRUCTIONS

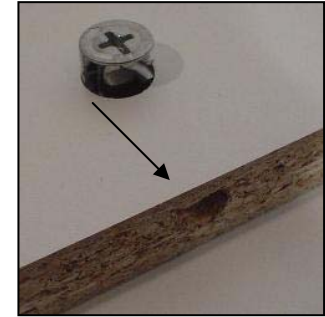
Single Width Base Unit

Step 6. Bottom Panel

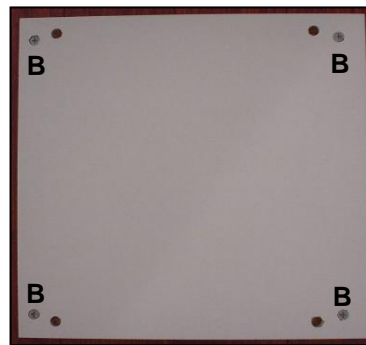
Insert the Circular Cams (fitting B) into the holes in the bottom panel.

Ensure the arrows on the circular cams, are pointing outwards, towards the pre-drilled edge.

6.1. Insert fitting B



6.2. Position of fitting B in Bottom Panel



Step 7. Fit Back Panel

Step 7.1

Take the back panel and push firmly home onto the end panel, as shown.

Ensure the cams are facing outwards.

7.1. Fit Back Panel to End Panel

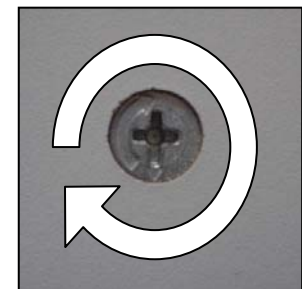


Step 7.2

Using a screwdriver, turn the circular cam clockwise to lock.

Repeat for all cams.

7.2. Lock Cams to secure





CROWN IMPERIAL ASSEMBLY INSTRUCTIONS

Single Width Base Unit

Step 8. Fit remaining End Panel

Fit the remaining end panel.

Lock all cams as before.

8. Fit remaining End Panel

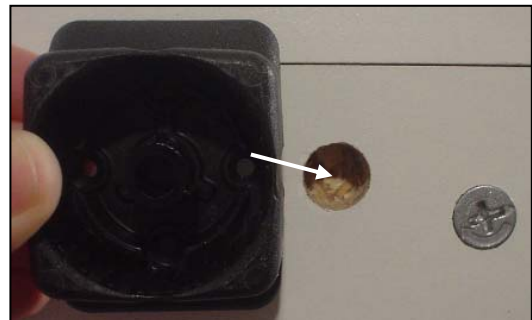


Step 9. Fitting Feet

Step 9.1 Attaching the Feet Blocks

On the bottom panel of the cabinet, locate the feet blocks with the flange facing the edge of the cabinet and push home.

9.1 Fix in Feet Blocks



Step 9.2 Securing Feet Blocks

To secure the feet blocks, hit the spigots 'X' with a hammer, as shown, taking care not to damage the surround.

Using two countersunk screws (fitting H), per block, secure further.

9.2 Secure Feet Blocks





CROWN IMPERIAL ASSEMBLY INSTRUCTIONS

Single Width Base Unit

Step 9.3 Push Feet into Feet Blocks

Push the adjustable feet, into the feet blocks. Adjust the height of the feet by turning them.

There is a sequence of numbers written on the feet to aid adjusting all feet to the same height.

Repeat for all four feet.

9.3 Fit Feet and Adjust Height



Step 10. Shelving

NOTE: Shelving is optional.

When the cabinet is installed, position shelves accordingly. Using four shelf studs (fitting N) position the shelf at the height desired.

Repeat this, if extra shelving is required.

NOTE: The shelf may have to slide in at an angle, for it to fit.



CROWN IMPERIAL ASSEMBLY INSTRUCTIONS

Single Width Base Unit

Complete Single Width Base Unit

